



## SERIE 068

## PNEUMATIC COUPLINGS PNEUMATISCHE KUPPLUNGEN



SUPER FLOW LINE SUPER DURCHFLUSS

**Interchangeability - Kompatibilität**  
RECTUS 68, SCHRADER HEAVY DUTY

**Temperature Range - Temperaturbereich**  
-20°C +100°C (-4°F +212°F)

**Working Pressure - Betriebsdruck**  
0 - 35 bar (0 - 508 PSI)

**Flow capacity - Nennweite**  
NW - 8.5

**Option - Optionen**

F - Straight through flow - ungehinderter Durchfluss  
S - Stainless Steel - Edelstahl  
V - Viton Seal - Viton Dichtung

For optional orders please add the symbol of your option end of the order no.  
Bei Optionsbestellungen Kennbuchstabe bitte hinzufügen

**Material - Material**

Coupler Body - Kupplungsgrundkörper: Steel Nickel Plated - Stahl vernickelt

Back Part - Hinterteil : Steel Nickel Plated - Stahl vernickelt

Sleeve - Hülse : Steel Nickel Plated - Stahl vernickelt

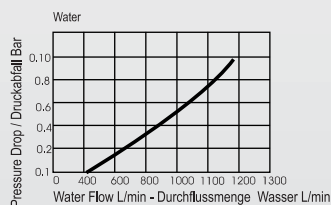
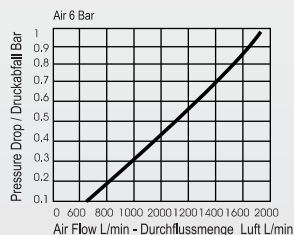
Valve - Ventil : Zinc Diecasting - Zinkdruckguß vernickelt

Springs - Federn : Stainless Steel - Edelstahl  
Locking O-Ring - Sprengling : Stainless Steel - Edelstahl AISI 420

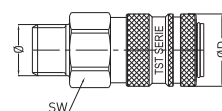
Pims - Stifte : Stainless Steel - Edelstahl

Seals - Dichtungen : Nitrile (Ni) - NBR (Ni)

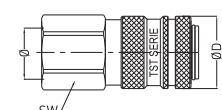
Plug - Nippel : Steel Nickel Plated - Stahl vernickelt



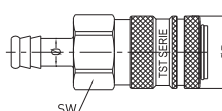
**Couplers and Plugs  
Kupplungen und Nippel**



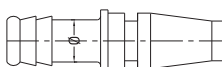
Male Threaded Coupling  
Kupplung mit Aussengewinde



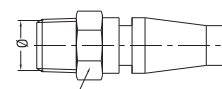
Female Thread Coupling  
Kupplung mit Innengewinde



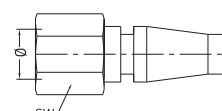
Standard Hose Barb Coupling  
Kupplung mit Schlauchtülle



Standard Hose Barb Plugs  
Nippel mit Schlauchtülle



Male Thread Plug  
Nippel mit Aussengewinde



Female Thread Plugs  
Nippel mit Innengewinde

Connection Anschlüsse	Order No Bestellnr.	SW	L	ØD
-----------------------	---------------------	----	---	----

BSP 3/8"	068 EG 17	30	66	33
BSP 1/2"	068 EG 21	30	69	33
BSP 3/4"	068 EG 26	30	72	33

BSP 1/4"	068 DG 13	30	63	33
BSP 3/8"	068 DG 17	30	64	33
BSP 1/2"	068 DG 21	30	68	33
BSP 3/4"	068 DG 26	30	72	33

10 mm - 3/8"	068 HG 10	30	80	33
13 mm - 1/2"	068 HG 13	30	80	33
19 mm - 3/4"	068 HG 19	30	80	33

10 mm - 3/8"	068 HU 10		70	
13 mm - 1/2"	068 HU 13		70	

BST P 1/4"	068 RU 13	18	48	
BSPT 3/8"	068 RU 17	22	50	
BSPT 1/2"	068 RU 21	22	52	
BSPT 3/4"	068 RU 26	27	53	

BSP 1/4"	068 DU 13	19	40	
BSP 3/8"	068 DU 17	22	40	