



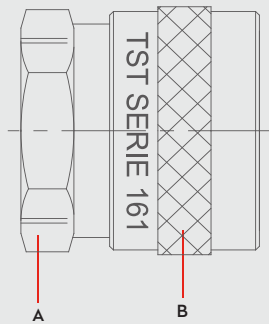
PNEUMATIC COUPLINGS  
PNEUMATISCHE KUPPLUNGEN

SERIE 161

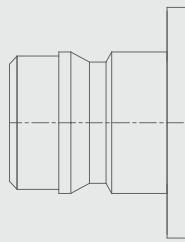
DN 20



**Materials**



S



**Material Code**

A = Brass Chrome Plated

B = Brass Chrome Plated

S = Brass Chrome Plated



0 - 25 bar  
(0-362 PSI)



-20° to + 100°C (NBR)  
-4° to + 212°F

**Shut Off Type**

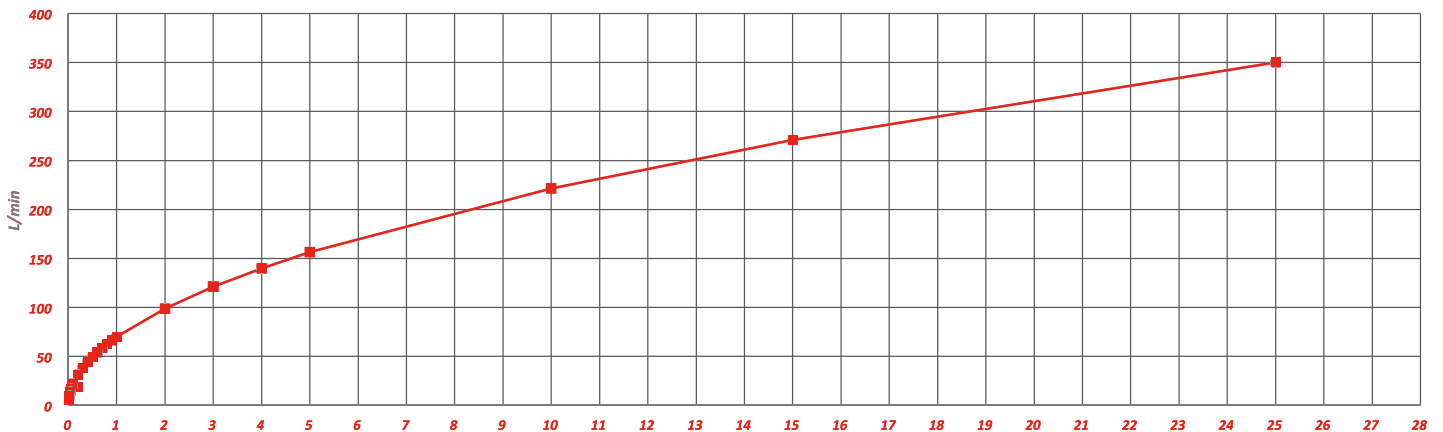


OM 300 - 02550  
CON - 3050 - 2050 - 40

**FULL FLOW**

**DN**

**20 mm**

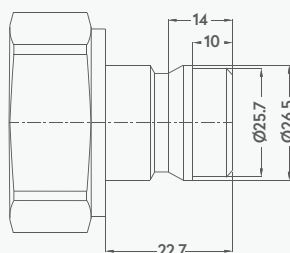


**Options**

FPM

AISI316  
Stainless Steel

**Plug Profile Serie 161**



**Compatible with**

DYROS  
NITO

3000



## UNVALVED QUICK COUPLINGS SCHNELLKUPPLUNGEN OHNE VENTIL

← with female thread

Connection	Part No.	ØD	L
BSP 1"	161 DGF 33	42,3	40

## PLUGS STECKNIPPEL

← with male thread

Connection	Part No.	L	SW
BSP 1"	161 EU 33	42	36

← with male thread HEX

Connection	Part No.	SW	L
BSP 1"	161 EU 33 - 01	36	40,5

← with female thread

Connection	Part No.	SW	L
BSP 1"	161 DU 33	36	40

← with female thread

Connection	Part No.	ØD	L
BSP 1"	161 DU 33 - 01	36	40

← with standard hose tail

Connection	Part No.	ØD	L
Ø 19	161 HU 19	30	63,5
Ø 25	161 HU 25	35	63,5

## ADAPTER ADAPTER

← with plastic hose tail

Connection	Part No.	L	L1
BSP 1" - Ø 25	161 GU 25	44	32